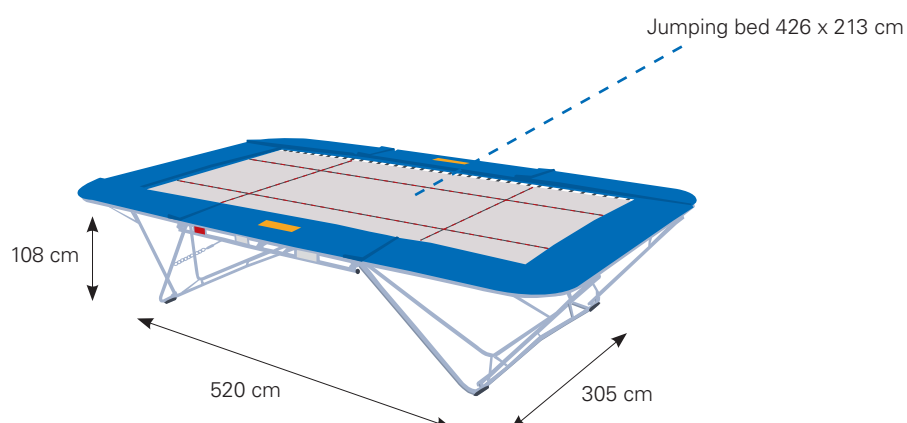
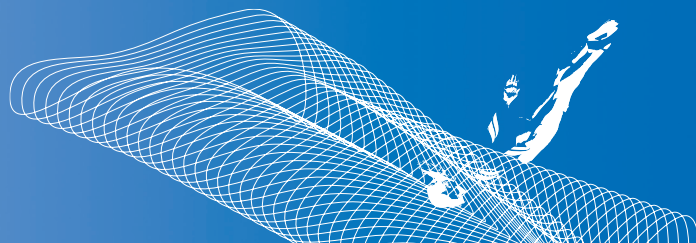


Grand Master

The Grand Master model is the forerunner of the Grand Master Exclusiv. It was developed in the Seventies at a time when the proficiency level in trampolining was getting higher and higher. It has the same frame measures as the Exclusiv and Premium models, but is 7 cm lower and has a round pipe pedestal. Grand Master models offer outstanding cost-effectiveness and have been used for many years in organised sport, schools and therapy. Several jumping bed variations enable usage geared exactly to the area of application. Grand Master has been continuously developed and improved until today, thus making it an excellent apparatus for everyone with sporting ambitions.





PRODUCT DETAILS:

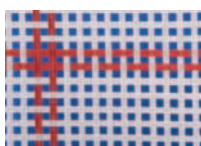
- Frame: Flat-oval steel tube 520 x 305 x 108 cm made of special steel; galvanized
- Legs: Round tube made of special steel, strengthened by brace; galvanized
- Jumping bed (426 x 213 cm) with 13 mm or 45 mm wide weaved nylon bands
- 118 steel springs (length 235 mm, Ø 30 mm); galvanized
- Shock absorbing and stable frame pads
- Genuine hologram label
- Total weight: 220 kg



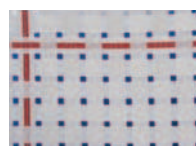
- [item 13000](#) Grand Master Super Spezial 13 mm, 1 pair roller stands
- [item 13100](#) Grand Master Super Spezial 13 mm, 1 pair lifting roller stands
- [item 13200](#) Grand Master Super Spezial 13 mm, 1 pair new lifting roller stands "Safe & Comfort"
- [item 15000](#) Grand Master 45 mm, 1 pair roller stands
- [item 15100](#) Grand Master 45 mm, 1 pair lifting roller stands
- [item 15200](#) Grand Master 45 mm, 1 pair new lifting roller stands "Safe & Comfort"

Jumping bed:

- [E21510](#) Jumping bed, 426 x 213 cm, made of 13 mm wide weaved nylon bands
- [E21710](#) Jumping bed, 426 x 213 cm, made of 45 mm wide weaved nylon bands



13 mm



45 mm

